





**The European Science Foundation  
is a non-governmental organisation  
based in Strasbourg, France**



# **European Science Foundation (ESF)**

**The ESF acts as a catalyst for the development of science by bringing together leading scientists and funding agencies to debate, plan and implement pan-European scientific and science policy initiatives.**

# ESF key characteristics

- **Pan-European** – 76 national research organisations from 29 countries
- **Multidisciplinary** – all disciplines covered:
  - Physical and engineering sciences
  - Life and environmental sciences
  - Medical sciences
  - Humanities
  - Social sciences
- **An independent voice** – non-governmental
- **High scientific quality** – leading scientists and leading funding agencies
- **Flexible decision making structures**

# ESF Member Organisations

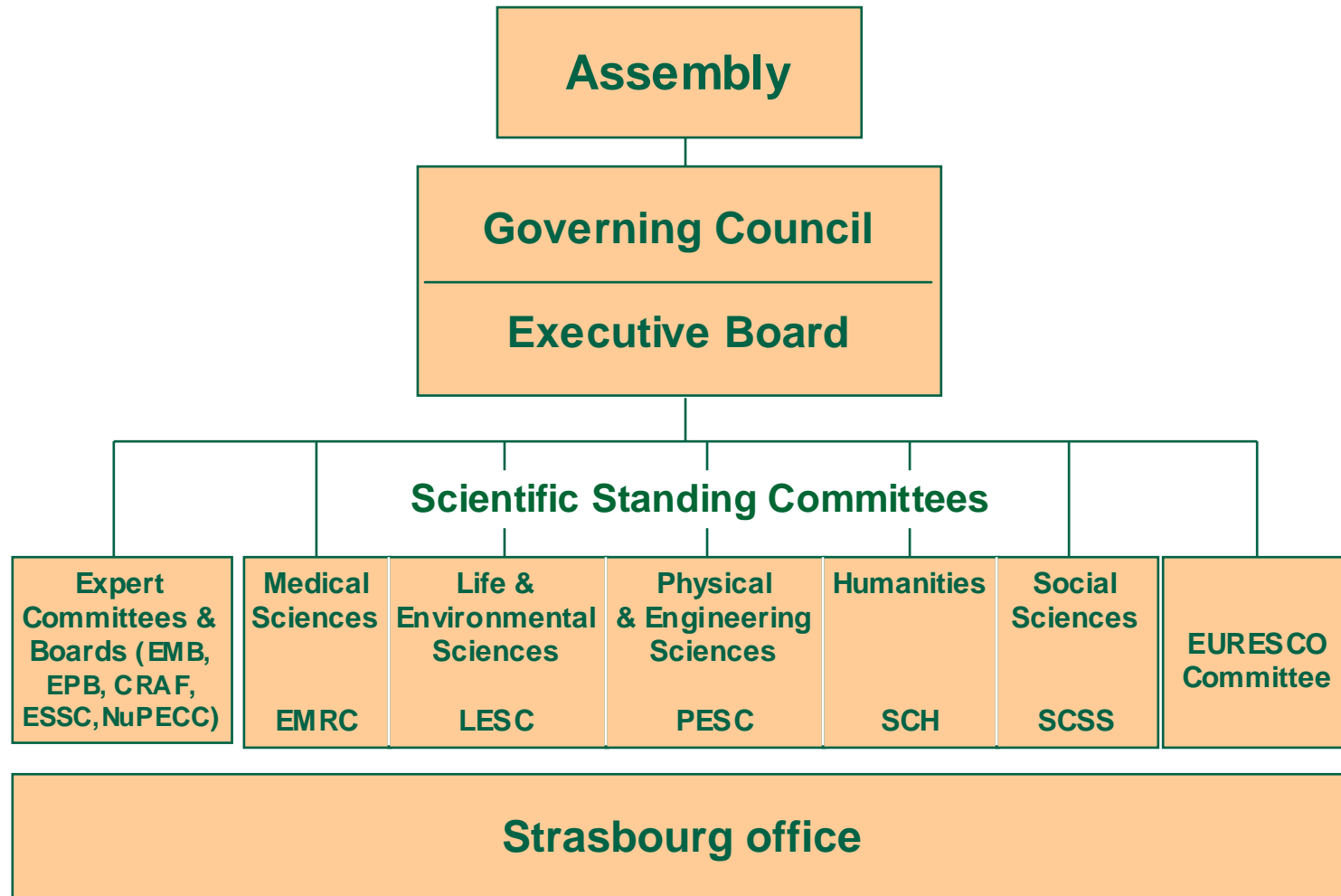
76 in 29 countries



# **Basic aims of ESF**

- **To advance European cooperation in basic research (mobility of researchers, free flow of information and ideas, use of facilities)**
- **To examine and advise on research and science policy issues of strategic importance**
- **To plan, and where appropriate, to manage collaborative research activities**

# ESF structure



# Criteria

## Scientific criteria

- High scientific quality
- “Non-linear” value added through European cooperation

## Policy criteria

- Balance of scientific fields in total set
- Beneficial for a wide range of European countries
- Satisfactory managerial and financial resources available

# **ESF instruments**

- **Exploratory Workshops**
- ***À la carte* Scientific Programmes**
- **Scientific Networks**
- **European Research Conferences**
- **EUROCORES**  
(European Science Foundation  
Collaborative Research Programmes)
- **Scientific Forward Looks**
- **Research Infrastructure Activities**
- **Science Policy Studies**

# Exploratory Workshops

- Normally one-off specialist meetings
- ‘Spearheading’ topics
- ‘Bottom-up’ through Open Call
- Occasionally ‘top-down’ on key topics
- May lead to ESF or other networks;  
*à la carte* programmes; FP proposals;  
position statements
- 25-30 scientists involved

# ESF Networks and Programmes

## Networks

Essentially interdisciplinary in character

Primarily orientated towards coordinating activities in order to stimulate and consolidate the European scientific community in specific fields

Deadlines for submission: 31 May and 30 November each year

## Programmes

Medium- to long-term activities focused on specific themes

Bring together substantive research projects carried out by multinational teams of researchers. Coordination of expertise at a European level

Participation from an average of 10 countries

May arise from exploratory workshops, networks or directly (PESC issues on Open Call)

# ESF Networks and Programmes

## Networks

## Programmes

### Activities

- **Workshops**  
(1 per year)
- **Exchange visits**  
(limited number)
- **Dissemination**

- **Workshops**  
(several per year)
- **Schools**
- **Conferences**
- **Fellowships**
- **Dissemination**

# ESF Networks and Programmes

## Networks

## Programmes

### Duration

Up to three years

Normally five years

### Funding

Funded through the  
ESF General Budget

Funded directly by ESF  
Member Organisations  
(*à la carte*)

€75k - €100k in total

€90k - €250k per annum

# European Research Conferences (EURESCO)

- cf. US Gordon Conferences
- Supported by ESF EURESCO Office
- Links to EC Framework Programme Conference Scheme
- Stimulation of free discussion on forefront topics
- No published proceedings
- Bring together younger and more experienced researchers
- 80-100 scientists involved

**Established 1990**

**European Science Foundation  
Collaborative Research Programmes**

**EUROCORES**

**To provide European critical mass in  
specific topics**

**To develop multilateral funding  
collaboration**

**Open and transparent variable geometry**

**International peer review essential**

**Funding remains national but 'networked'**

# Scientific Forward Looks

- **Medium - long term scientific perspectives**
- **Multidisciplinary topics viewed from a European level**
- **Bring together scientists and policy makers from ESF Member Organisations**
- **Wide consultation**
- **Major reports and action plans should result**

# Research Infrastructures (RI)

- **In ESF mandate since 1974**
- **ESF scientific studies for RI has led to the creation of new facilities e.g. ESRF**
- **RI studies comprise analysis of the scientific and technical care and follow up with funding organisations**
- **ESF also undertakes assessments and evaluations of RI**

# **Scientific Policy**

## **workshops/symposia**

- **Includes Science Policy and Research**

**Infrastructure meetings**

- **Lead to reports or to new ESF initiatives**
- **Close involvement with Member Organisations**
- **ERA, FP7 and ERC discussions**

# **EU COST Actions**

**ESF works as operator  
for EU COST actions**

**ESF COST office in  
Bruxelles**

## **Expert Committees and Boards**

**Groups of scientists working on matters of particular concerns for Europe:**

- Committee on Radio Astronomy Frequencies (CRAF)**
- European Space Science Committee (ESSC)**
- Nuclear Physics European Collaboration Committee (NuPECC)**
- ESF Marine Board (ESF -MB)**
- European Polar Board (EPB)**

# **European Science Foundation**

## ***Standing Committee for the Physical and Engineering Sciences (PESC)***

**European Science Foundation**

**B.P. 90015**

**1 quai Lezay-Marnésia**

**67080 Strasbourg cedex**

**France**

***Email: [pesc@esf.org](mailto:pesc@esf.org)***

***<http://www.esf.org/pesc>***